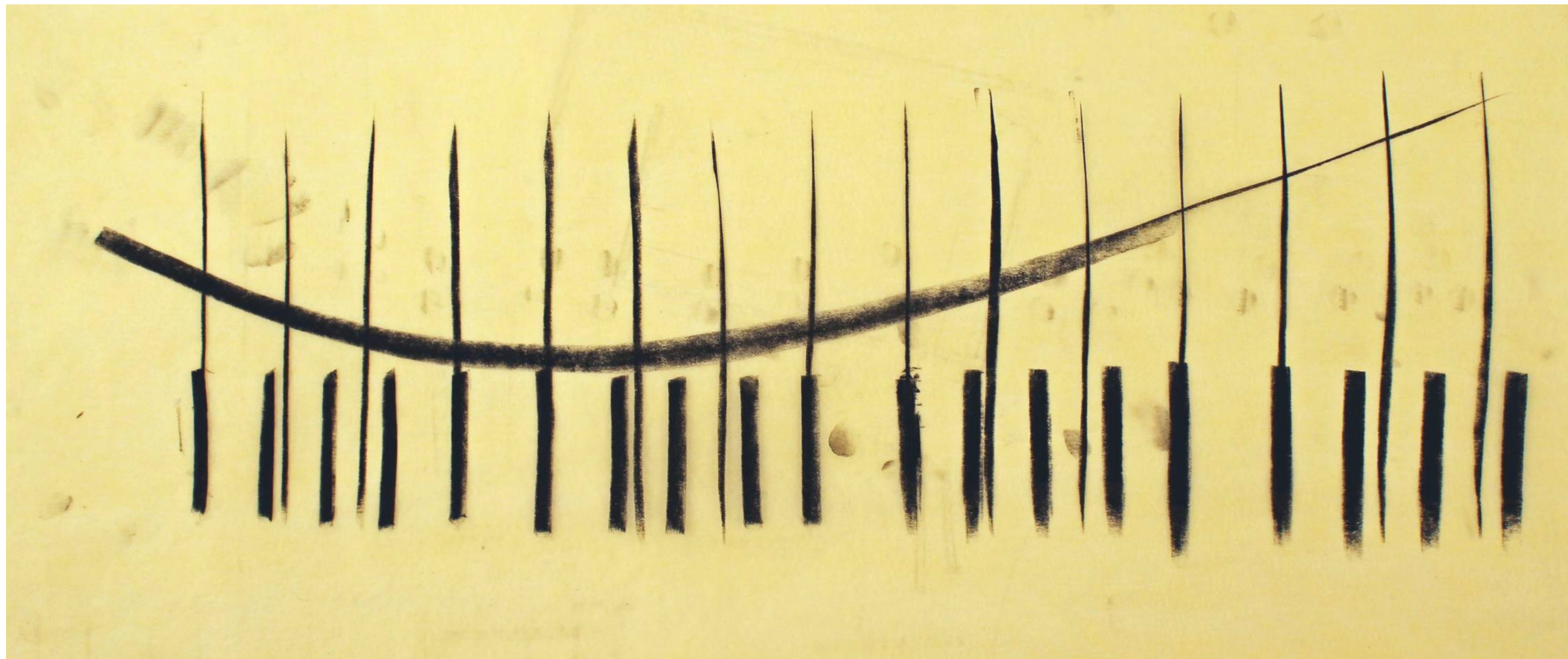


UNIVERSITY OF OREGON
OREGON BACH FESTIVAL

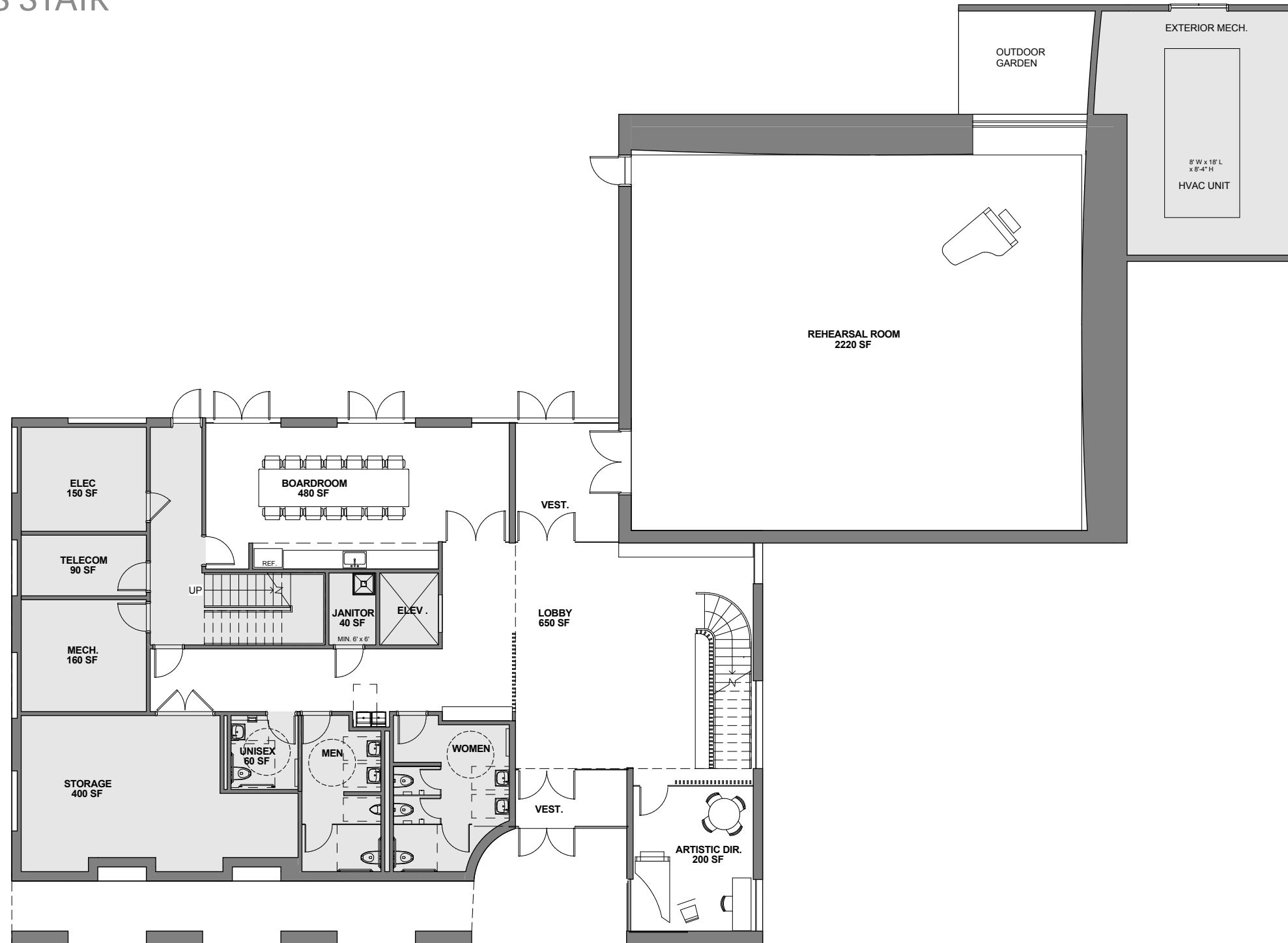
HACKER



Floor Plans

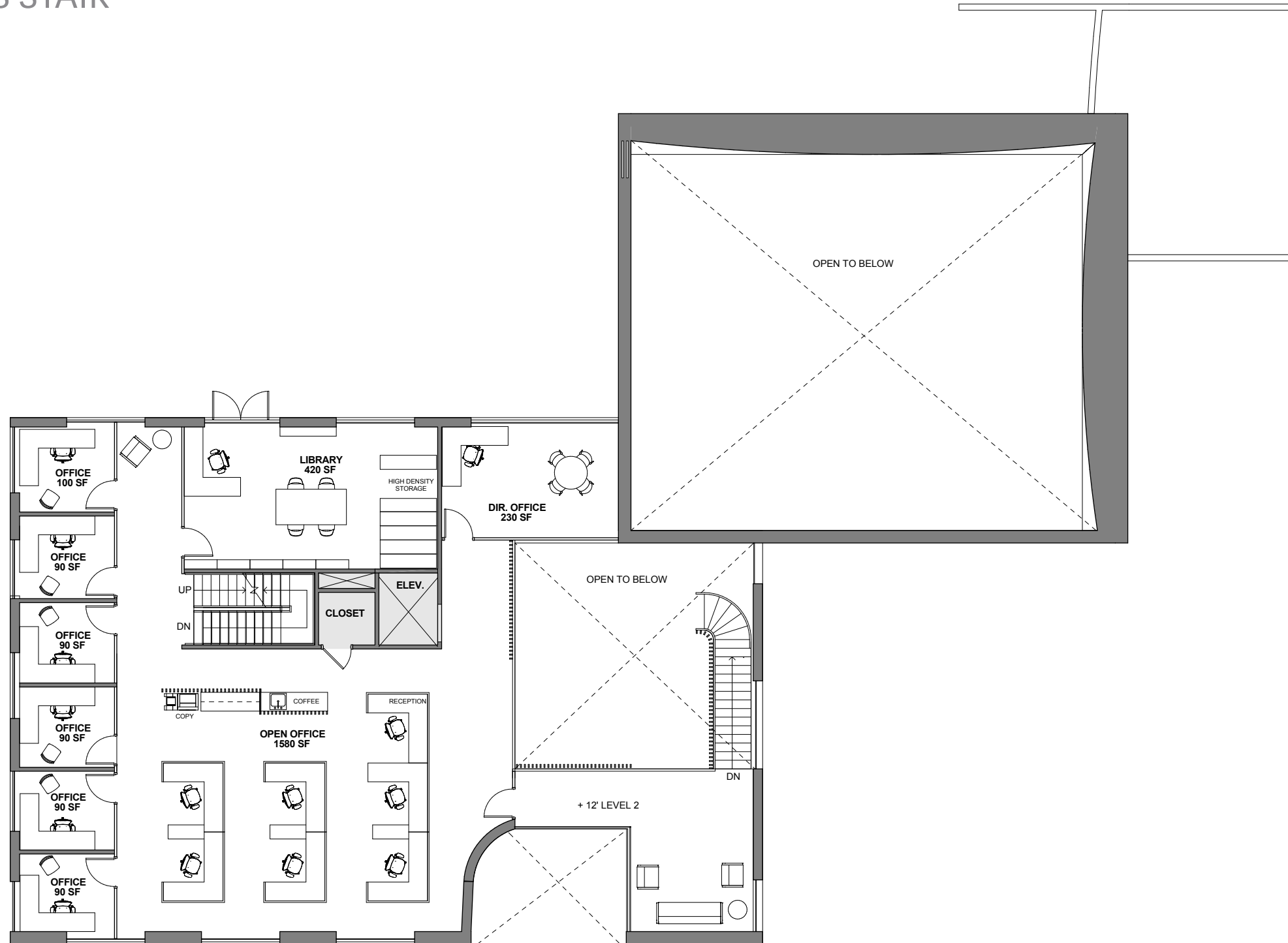
CENTRAL EGRESS STAIR

LEVEL 1



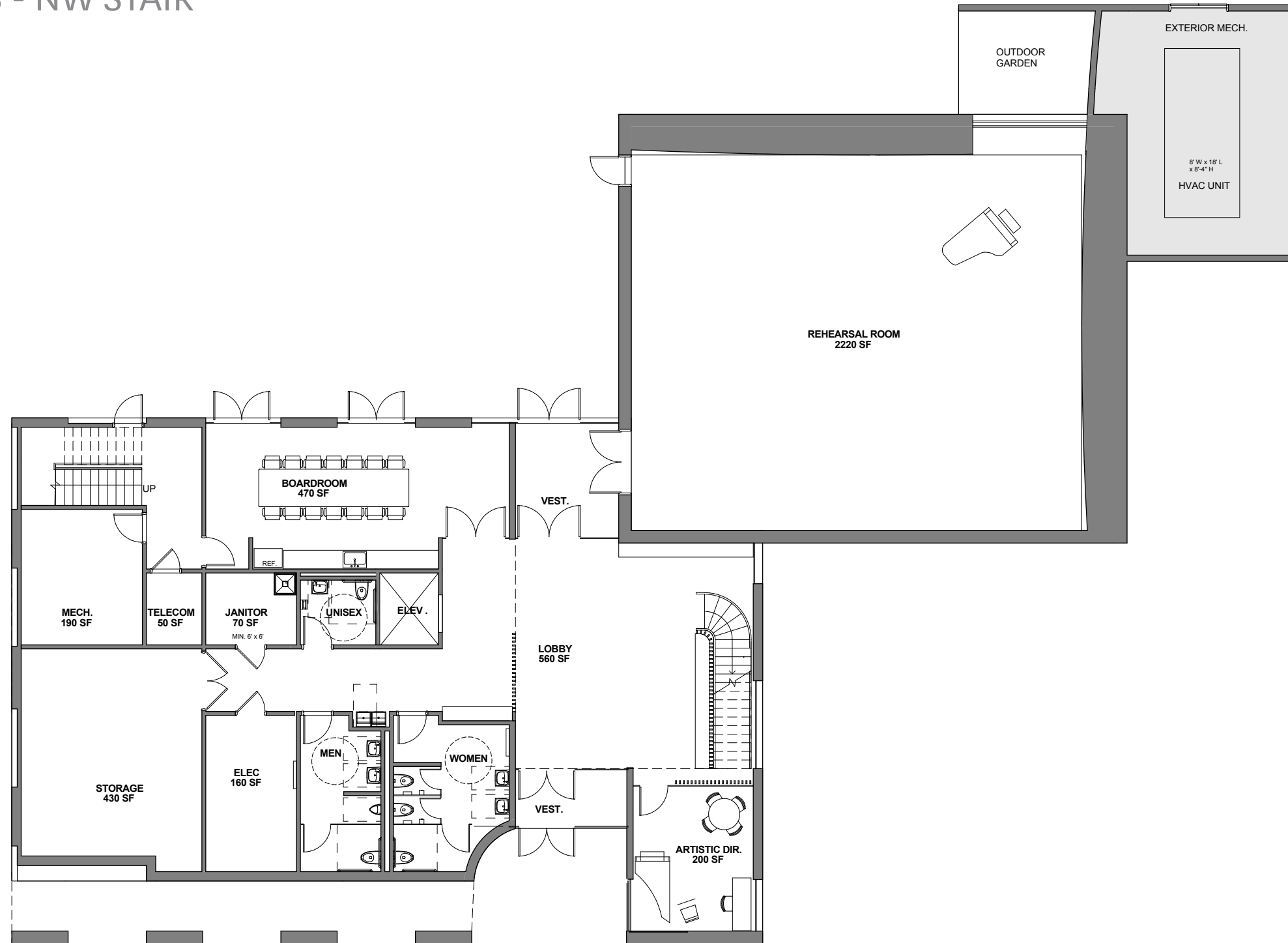
CENTRAL EGRESS STAIR

LEVEL 2



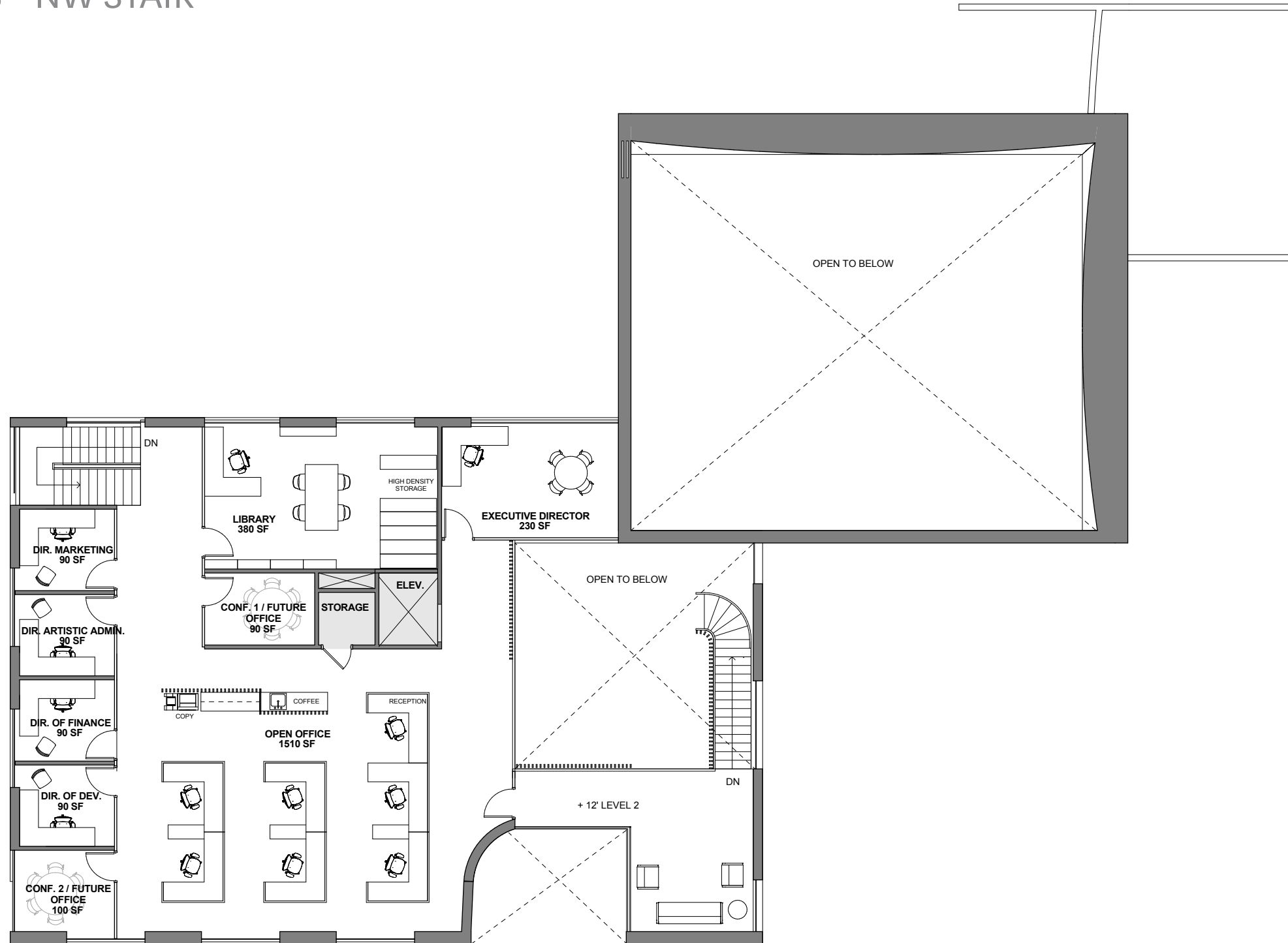
PREVIOUS PLANS - NW STAIR

LEVEL 1



PREVIOUS PLANS - NW STAIR

LEVEL 2

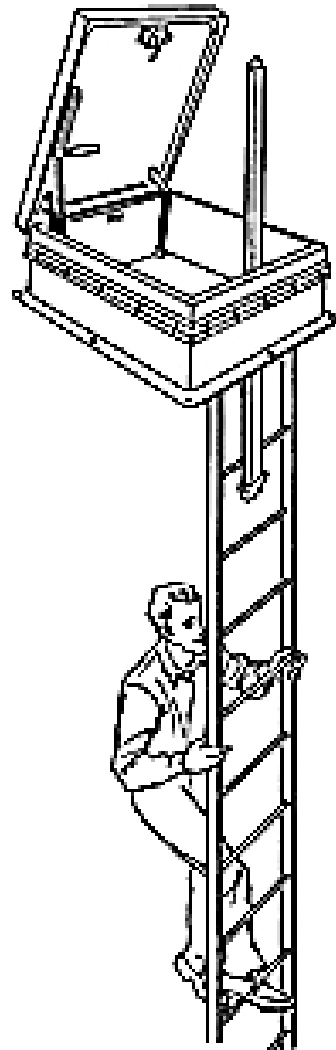


ROOFTOP HVAC & ACCESS

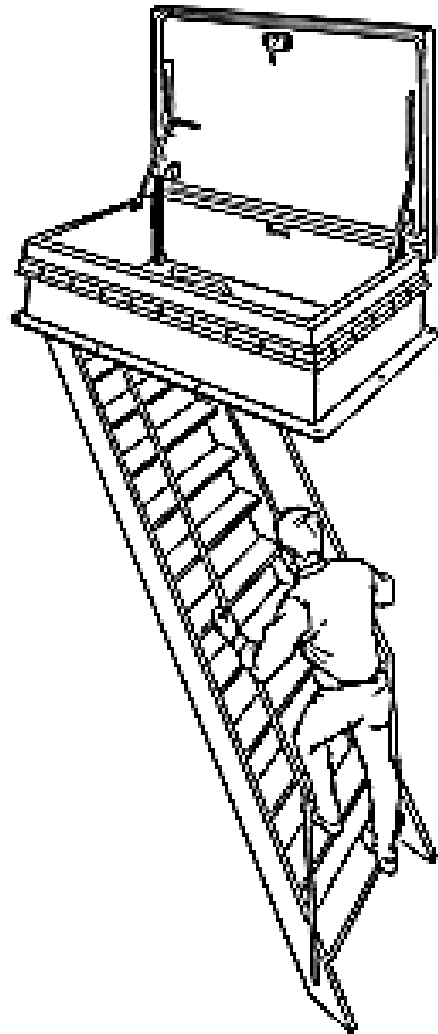
RN UNITS 26-70 TON **AAON**

WITH ECONOMIZER, POWER EXHAUST

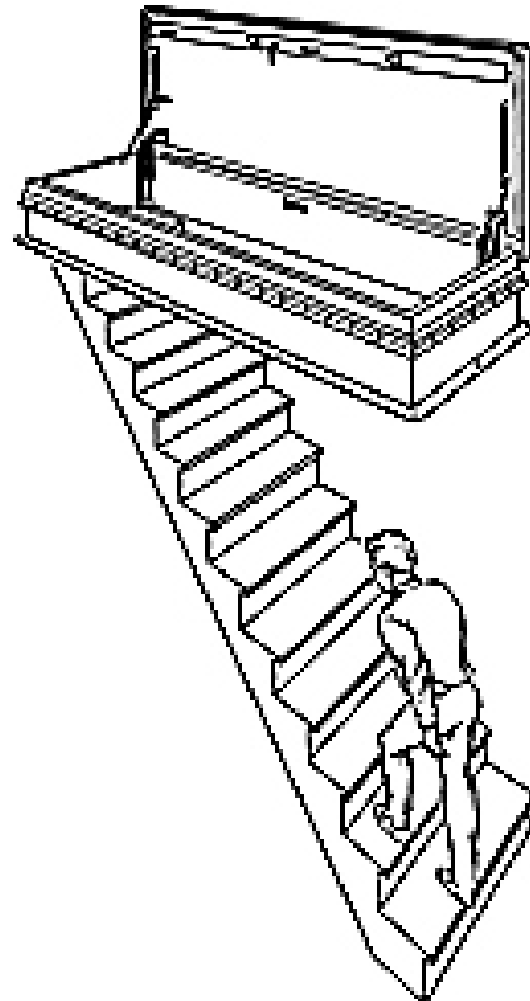
LADDER



SHIPS LADDER



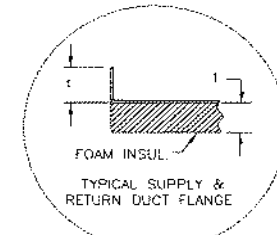
STAIR



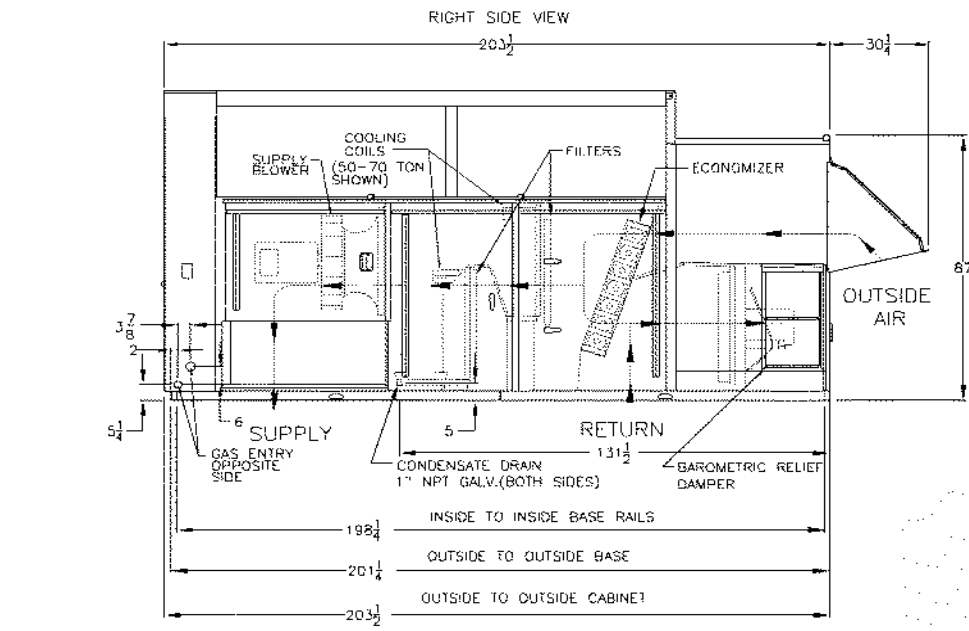
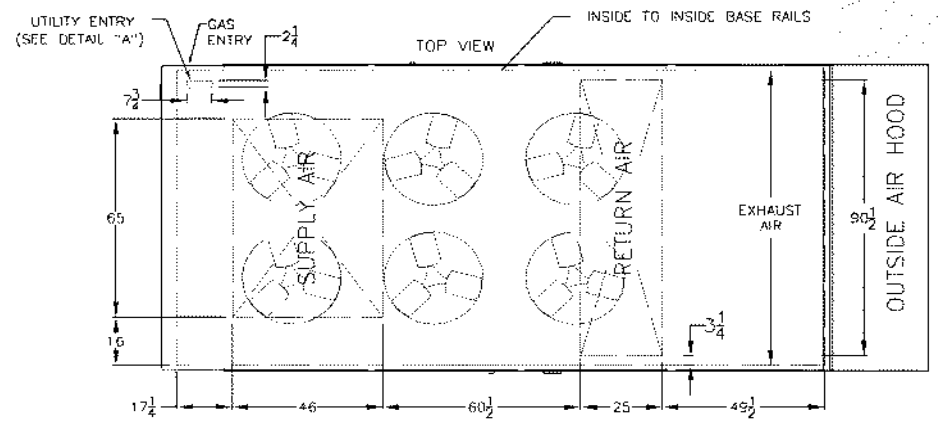
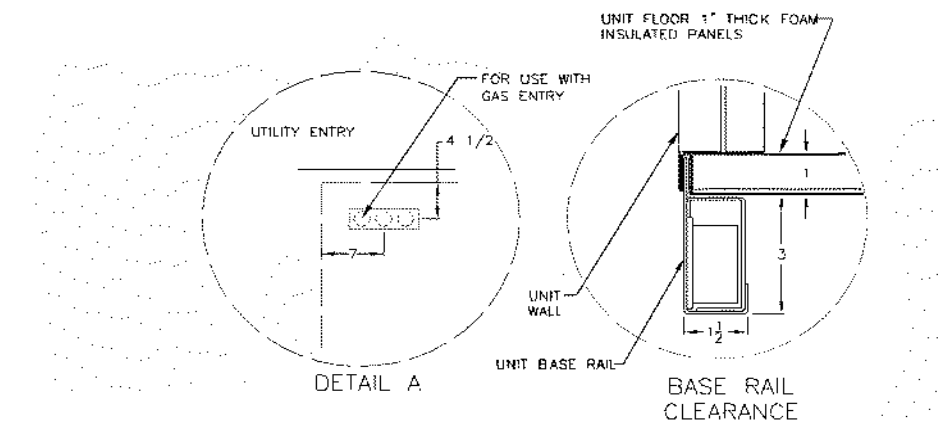
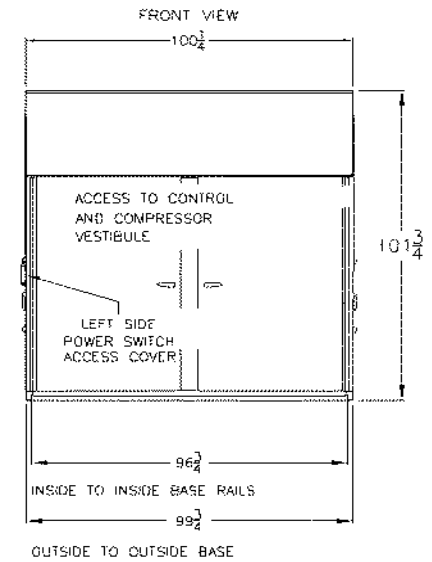
CLEARANCES	
LOCATION	UNIT SIZE
	26-70 TON
RETURN AIR BACK	48
VENT SIDE FRONT	48
LEFT SIDE	48
RIGHT SIDE	70
TOP	UNOBSTRUCTED

NOTE: RIGHT AND LEFT SIDE CLEARANCES ARE INTERCHANGEABLE ON UNITS THAT DO NOT HAVE THE HYDRONIC HEATING OPTION. (UNITS WITH HYDRONIC HEAT MUST HAVE 70" RIGHT SIDE ACCESS FOR SERVICE.)

NOTE: 26-40 TON UNITS INCLUDES A SINGLE COOLING COIL. 50-70 TON UNIT INCLUDE TWO COOLING COILS.

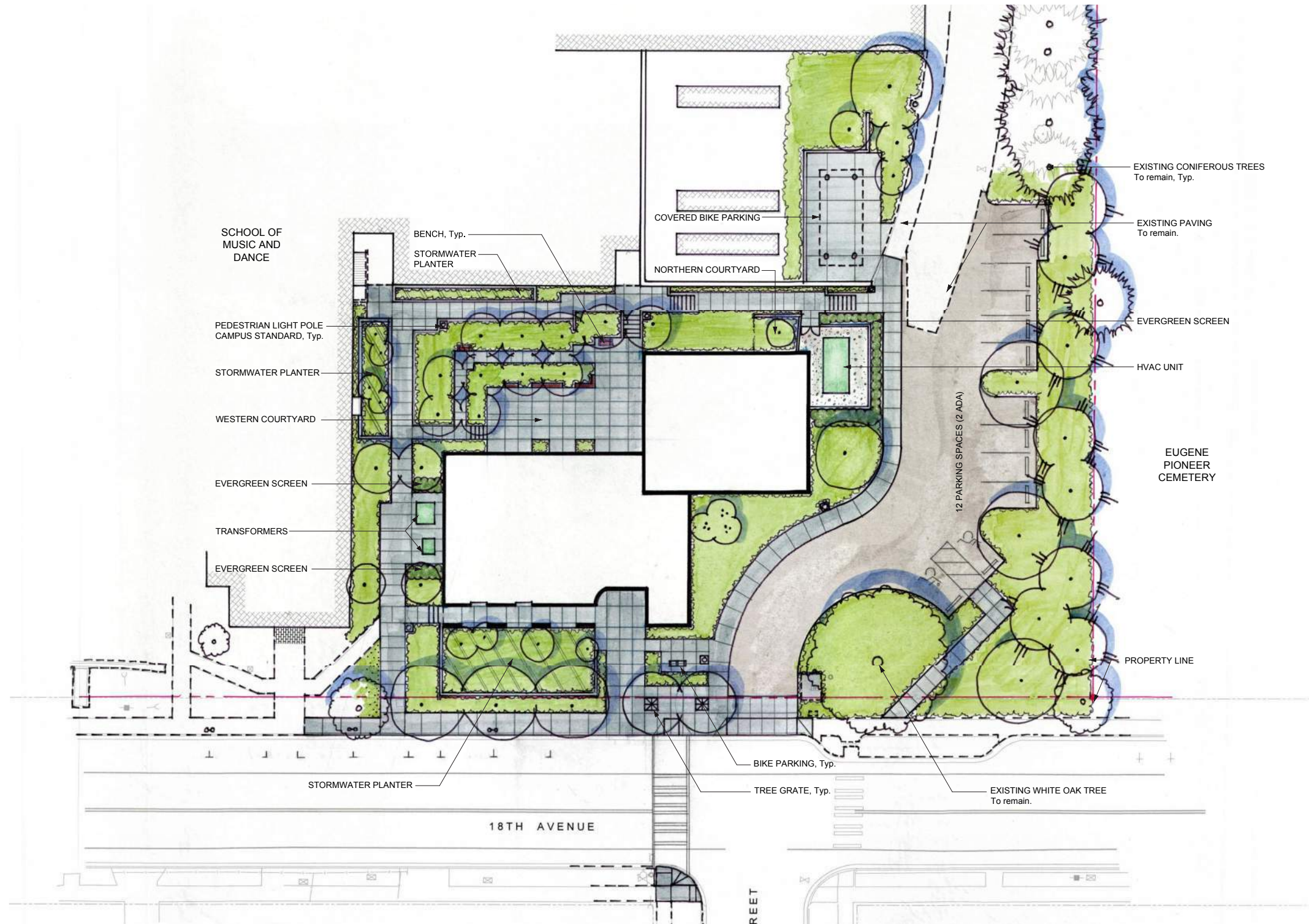


DETAIL B



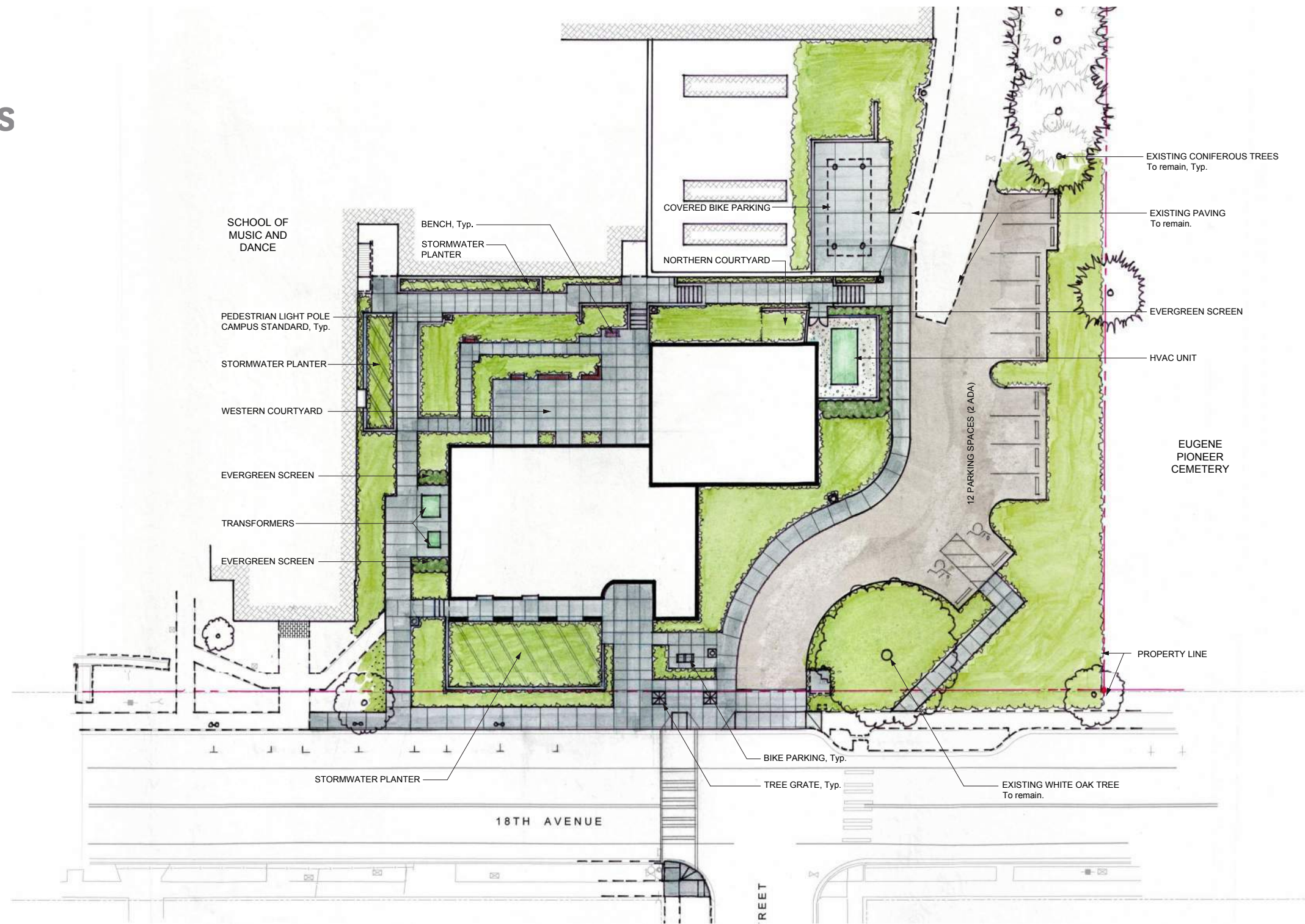
Site Design

SITE PLAN



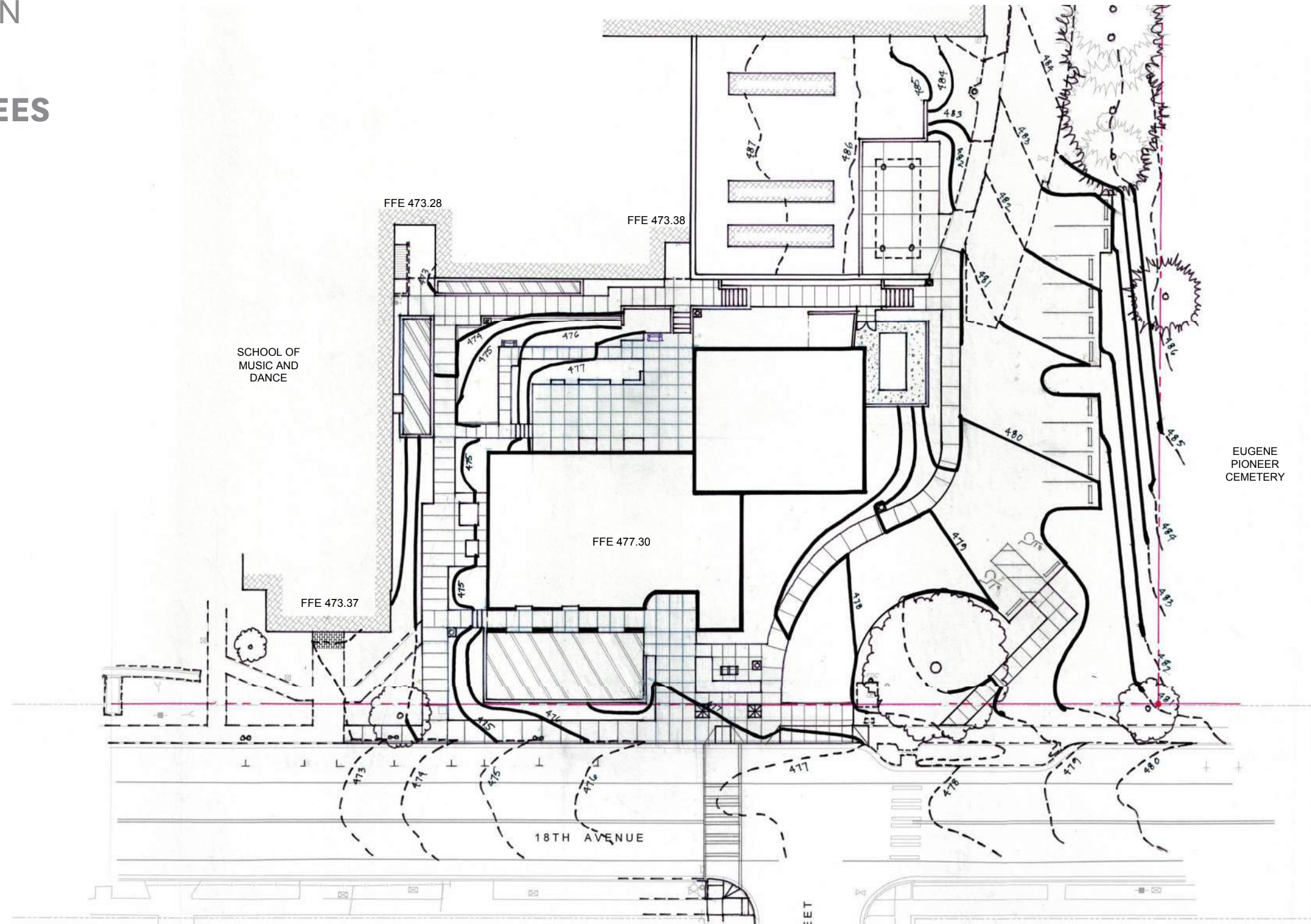
SITE PLAN

WITHOUT TREES



GRADING PLAN

WITHOUT TREES

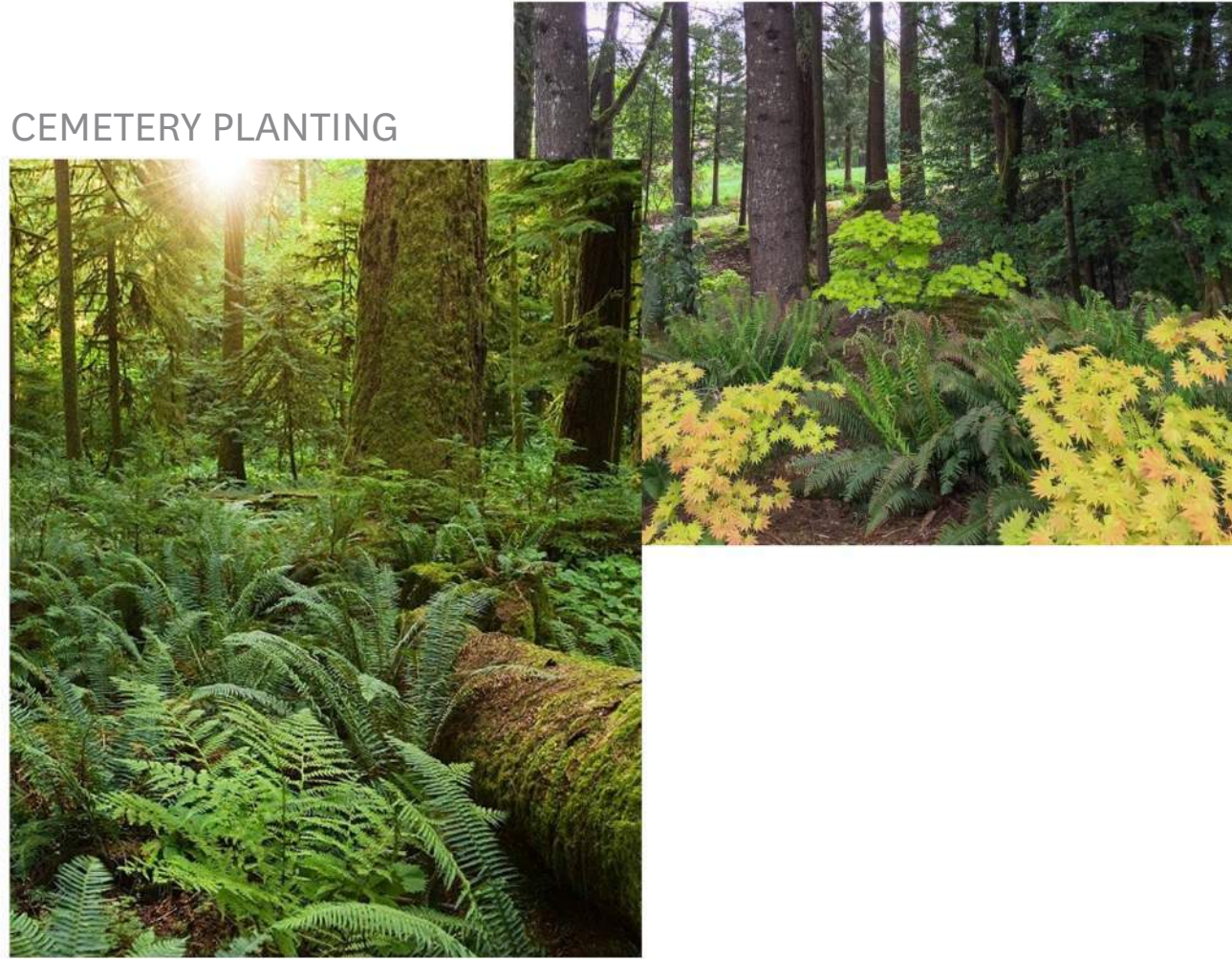


Landscape

URBAN EDGE MASSINGS



CEMETERY PLANTING



STORMWATER PLANTERS



NORTH GREENROOF WALL AND HVAC SCREENING



CAMAS AT WHITE OAK TREE



COURTYARD



REHEARSAL ROOM GARDEN



NATIVE TREES



Doug Fir



California Incense Cedar



Pacific Dogwood



Vine Maple



Rocky Mountain Maple

TREES FOR STORMWATER PLATERS



Persian Parrotia



River Birch



Amelanchier



Katsura

TREES ON 18TH



Stewartia



Columnar Tulip Tree



Seven Sons Tree



Pyramidal European Hornbeam

Malus tschonoskii
Upright Crabapple



Cornus 'Eddie's White Wonder'
Eddie's White Wonder Dogwood



Stewartia japonica
Japanese Stewartia



Styrax japonicus
Japanese Snowbell



ACCEPTING

HARPSICHORD













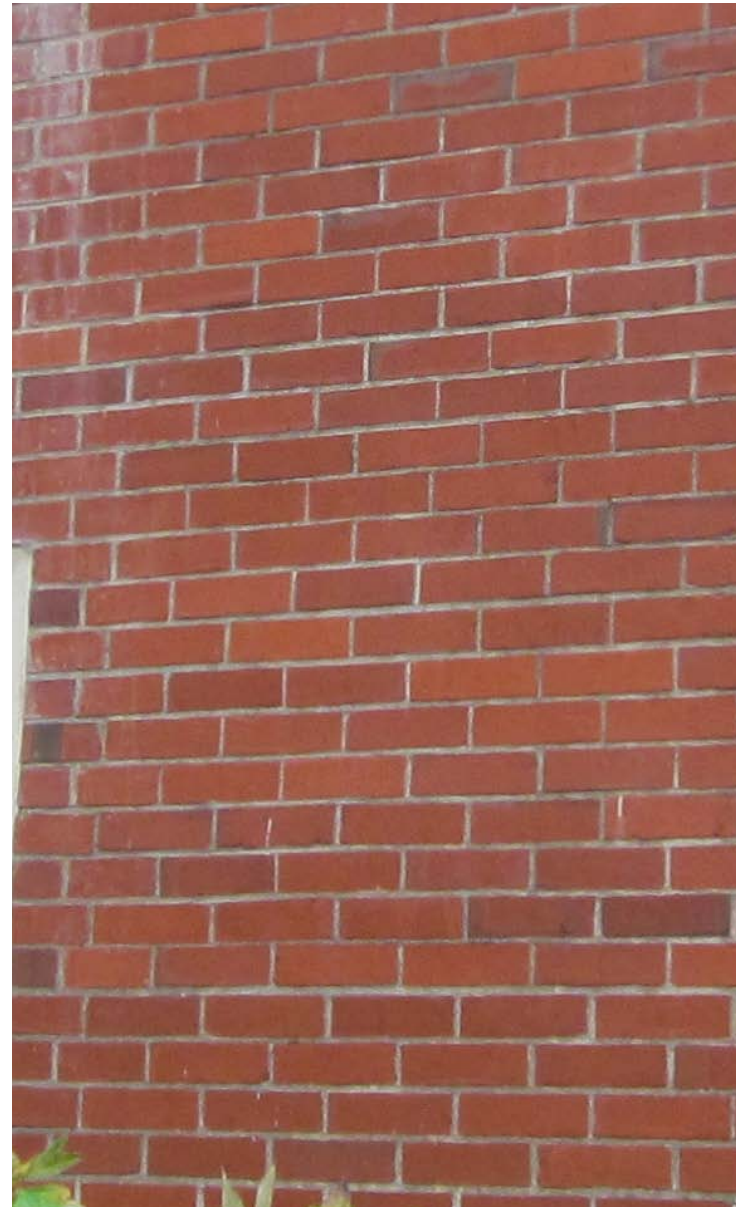
Exterior Materials

SOMD BRICK BLENDS

1920



1950



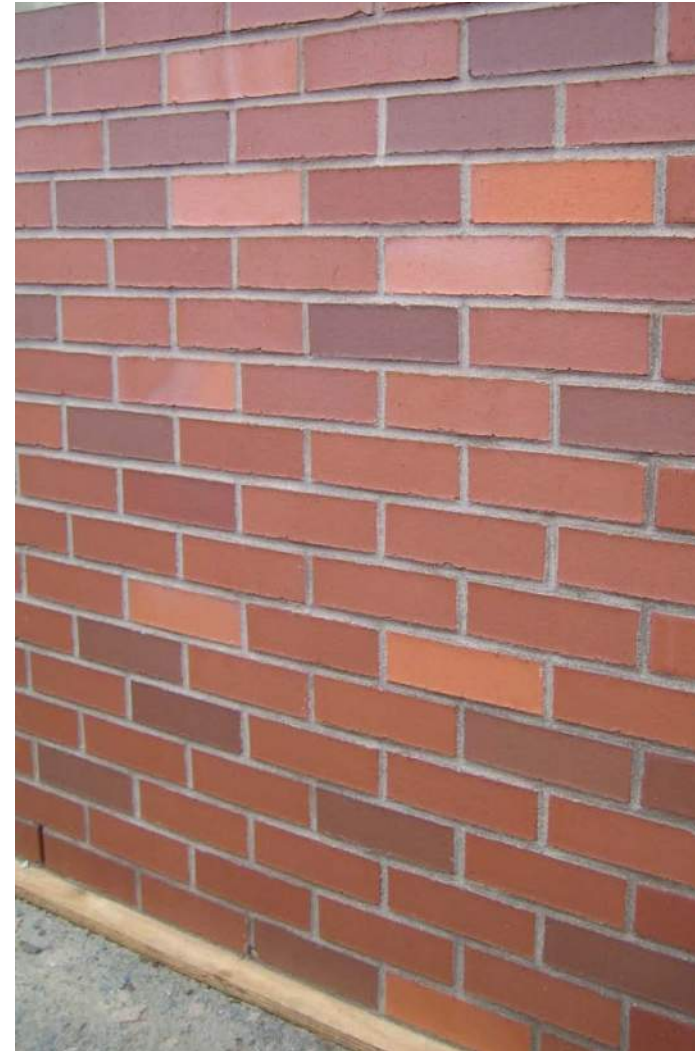
1970



2009



HEDCO BRICK BLEND



EXTERIOR MATERIALS

RESIN IMPREGNATED FILES



PARKLEX



PARKLEX



PARKLEX

